



Trypsin-1 Polyclonal Antibody

Catalog No	YP-Ab-04258
Isotype	IgG
Reactivity	Human;Rat;Mouse;
Applications	WB;ELISA
Gene Name	PRSS1
Protein Name	Trypsin-1
Immunogen	The antiserum was produced against synthesized peptide derived from human Trypsin-1. AA range:60-109
Specificity	Trypsin-1 Polyclonal Antibody detects endogenous levels of Trypsin-1 protein.
Formulation	Liquid in PBS containing 50% glycerol, 0.5% BSA and 0.02% sodium azide.
Source	Polyclonal, Rabbit,IgG
Purification	The antibody was affinity-purified from rabbit antiserum by affinity-chromatography using epitope-specific immunogen.
Dilution	Western Blot: 1/500 - 1/2000. ELISA: 1/10000. Not yet tested in other applications.
Concentration	1 mg/ml
Purity	≥90%
Storage Stability	-20°C/1 year
Synonyms	PRSS1; TRP1; TRY1; TRYP1; Trypsin-1; Beta-trypsin; Cationic trypsinogen; Serine protease 1; Trypsin I
Observed Band	23kD
Cell Pathway	Secreted, extracellular space.
Tissue Specificity	Brain,Cajal-Retzius cell,Gastric adenocarcinoma,PCR rescued clones,Prostate,
Function	catalytic activity:Preferential cleavage: Arg- -Xaa, Lys- -Xaa.,caution:Tyr-154 was proposed to be phosphorylated (PubMed:8683601) but it has been shown (PubMed:17087724) to be sulfated instead. Phosphate and sulfate groups are similar in mass and size, and this can lead to erroneous interpretation of the results.,cofactor:Binds 1 calcium ion per subunit.,disease:Defects in PRSS1 are a cause of hereditary pancreatitis (HPC) [MIM:167800]; also known as chronic pancreatitis (CP). HPC is an autosomal dominant disease characterized by the presence of calculi in pancreatic ducts. It causes severe abdominal pain attacks.,function:Has activity against the synthetic substrates Boc-Phe-Ser-Arg-Mec, Boc-Leu-Thr-Arg-Mec, Boc-Gln-Ala-Arg-Mec and Boc-Val-Pro-Arg-Mec. The single-chain form is more active than the two-chain form against all of these substrates.,mass spectrometry: PubMed:8683601,PTM:Occ

**Background**

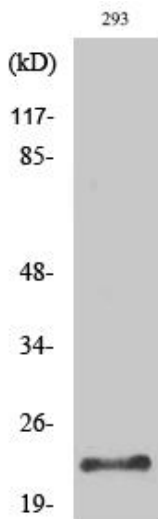
This gene encodes a trypsinogen, which is a member of the trypsin family of serine proteases. This enzyme is secreted by the pancreas and cleaved to its active form in the small intestine. It is active on peptide linkages involving the carboxyl group of lysine or arginine. Mutations in this gene are associated with hereditary pancreatitis. This gene and several other trypsinogen genes are localized to the T cell receptor beta locus on chromosome 7. [provided by RefSeq, Jul 2008],

matters needing attention

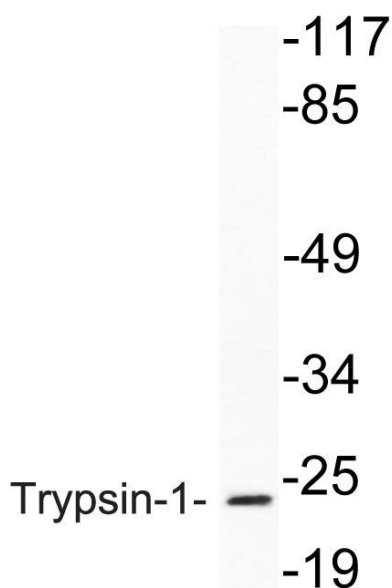
Avoid repeated freezing and thawing!

Usage suggestions

This product can be used in immunological reaction related experiments. For more information, please consult technical personnel.

Products Images

Western Blot analysis of various cells using Trypsin-1 Polyclonal Antibody diluted at 1:500. Secondary antibody(catalog#:RS0002) was diluted at 1:20000



Western blot analysis of lysate from 293 cells, using Trypsin-1 antibody.